

# MunEDA 사 Schematic Porting Tool (SPT)

A. 목적 : Circuit Porting & Migration Tool

B. 구분 : Ease Circuit Migration & IP Reuse of Custom Circuits between Various Process Technologies

C. Supported Platform and O/S System

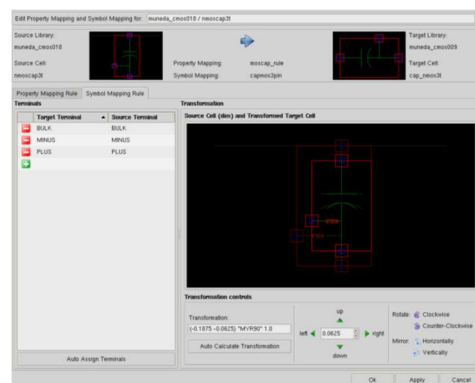
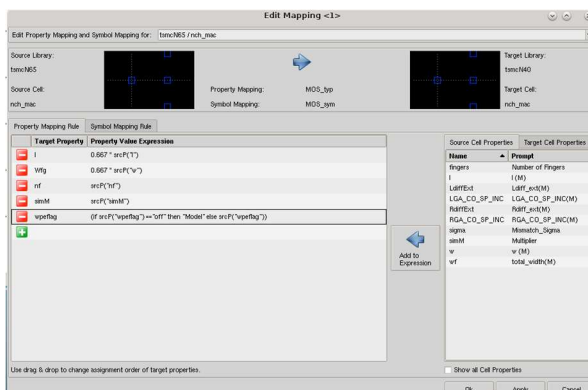
- RHEL 5, 6, 7

D. 특성 및 기능

- PDK to PDK Migration 기능 제공
- Undo 기능을 통한 Roll-back 기능 제공
- TSMC Partner社로서 다양한 Circuit에 대한 Migration 경험 보유
- Cadence Virtuoso Interface 내에서의 실행을 지원하여 사용 편의성 확보

	Source Lib	Source Cell	Target Lib	Target Cell	Property Mapping Rule	Symbol Mapping Rule
	tsmcN65	crtmom	tsmcN40	crtmom	Crtmom	crtmom_sym
	tsmcN65	moscap_rf	tsmcN40	moscap_rf	moscap_rf	moscap_rf_sym
	tsmcN65	nch_mac	tsmcN40	nch_mac	MOS_typ	MOS_sym
	tsmcN65	nchx	tsmcN40	nchx	nch_prop	nch_symbol
	tsmcN65	nmos_rf	tsmcN40	nmos_rf	RFMOS	RFMOS_sym
	tsmcN65	pch_mac	tsmcN40	pch_mac	MOS_typ	MOS_sym
	tsmcN65	rppolywo	tsmcN40	rppolywo	BB_Poly_Res1b	Poly_Res1b_sym
	tsmcN65	spiral_sym_ct_mu_z	tsmcN40	spiral_sym_ct_mu_z_a	spiral_sym_ct	spiral_sym_ct_sym

Schematic Porting Tool GUI 화면 예시 (TSMC 65nm -> TSMC 40nm)



Migration 간 Cell의 Property (Callback값 포함) / Symbol 까지 동시 변환 가능



회사명 : (주) 링크글로벌21  
 웹사이트 : www.linkglobal21.com  
 이메일 : eda@linkglobal21.com  
 대표전화 : 070-5138-0700